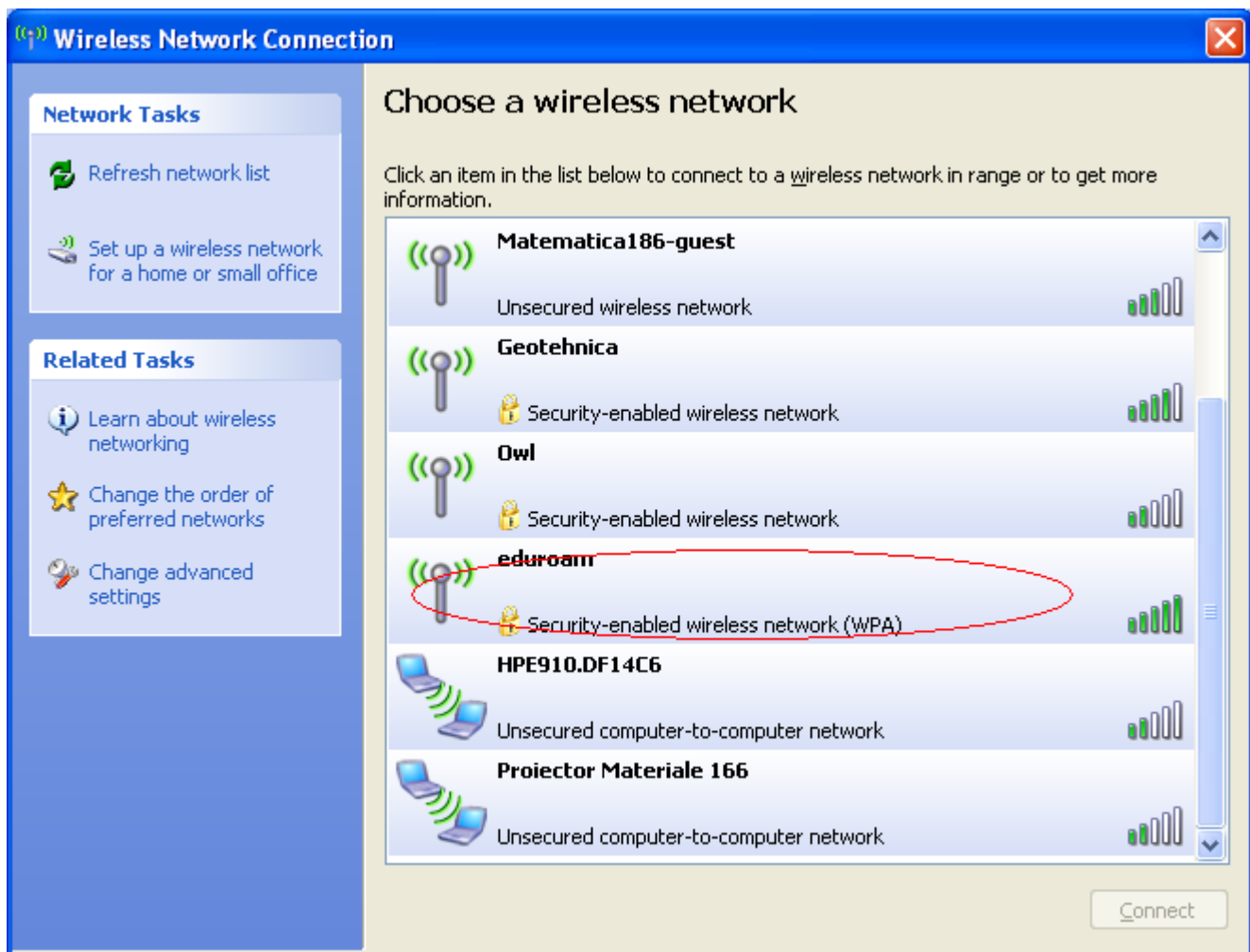


Tutorial de conectare la rețeaua EduRoam de pe Windows XP

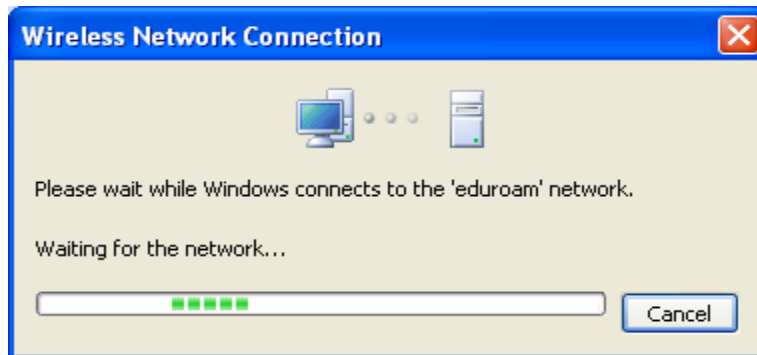
Windows XP

Pentru a putea face configurarea rețelei Eduroam trebuie să urmați următorii pași:

1. Se selectează rețeaua cu SSID eduroam





2. Se asteapta pana cand procedura de conectare dispare



3. Din meniul **Wireless network connections** se selecteaza **Change advanced settings** din partea stanga a ecranului :

Wireless Network Connection

Network Tasks











-  Refresh network list
-  Set up a wireless network for a home or small office

Related Tasks

-  Learn about wireless networking
-  Change the order of preferred networks
-  [Change advanced settings](#)

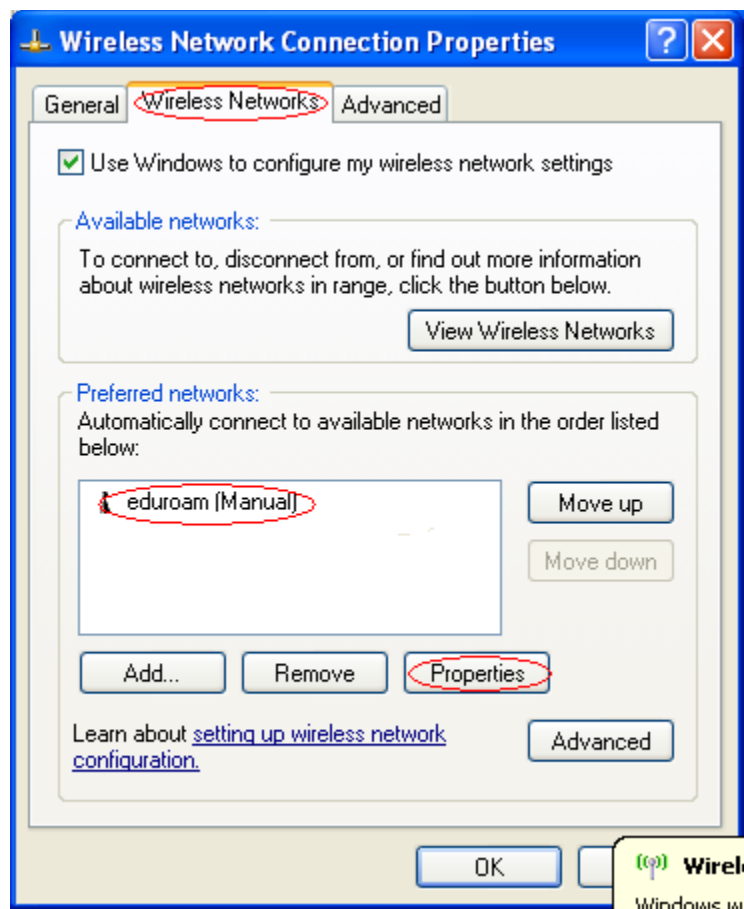
Choose a wireless network

Click an item in the list below to connect to a wireless network in range or to get more information.

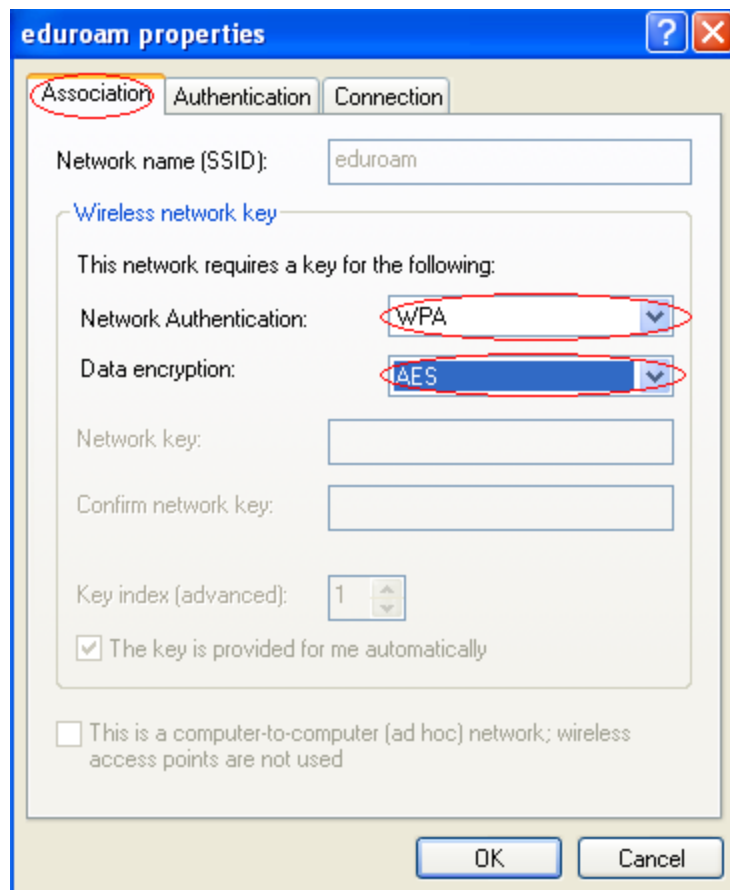
	Cisco Security-enabled wireless network (WPA)	Validating identity ★	
	eduroam Security-enabled wireless network (WPA) This network requires a network key. If you want to connect to this network, click Connect.	Manual ★	
	Matematica186 Security-enabled wireless network (WPA)		
	Matematica186-guest Unsecured wireless network		
	Geotehnica		

Connect

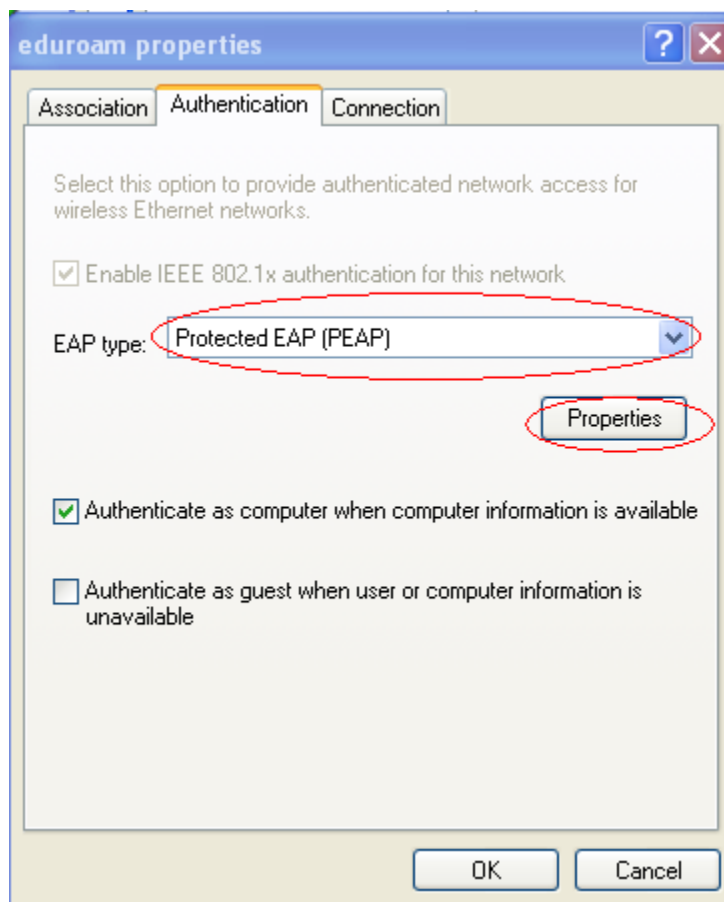
5. Se selecteaza **Wireless networks** se da click pe retea cu SSID-ul **eduroam** si apoi se selecteaza optiunea **Properties**:



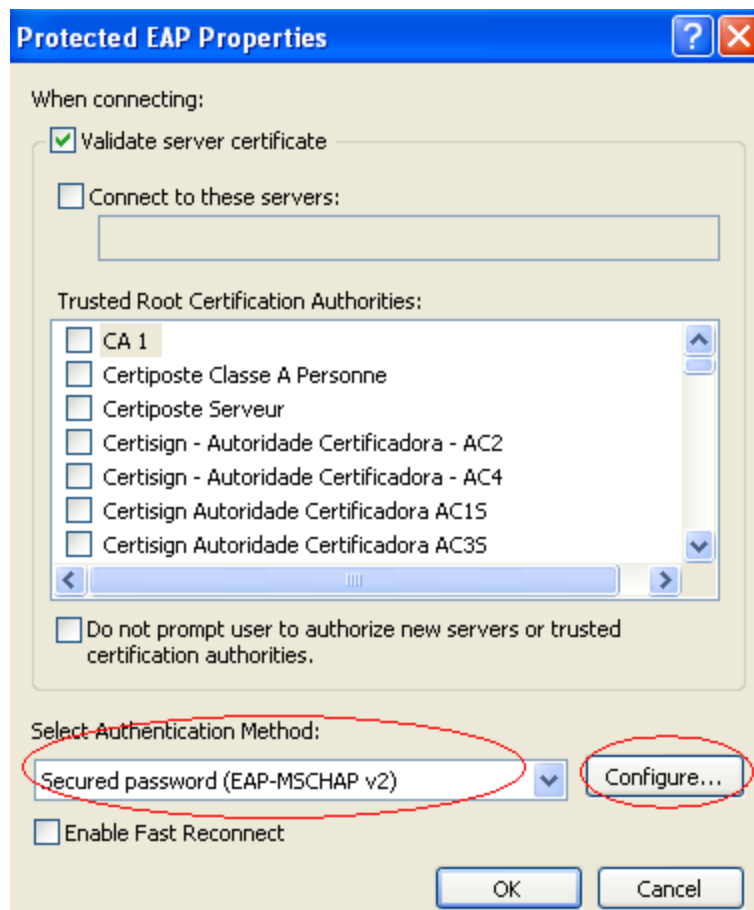
6. In meniul **Properties**, sectiunea **Association**, rubrica **Network Authentication** trebuie selectat (in caz ca nu este deja) ca si **WPA** iar in rubrica **Data encryption** trebuie selectat (in caz ca nu este deja) **AES**



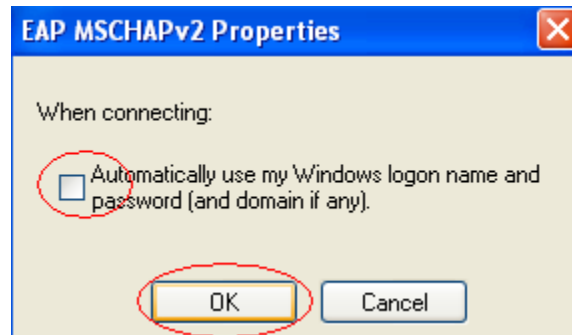
7. In sectiunea **Authentication** la rubrica **EAP type** trebuie selectat : **Protected EAP (PEAP)**, apoi se da click pe **Properties**.



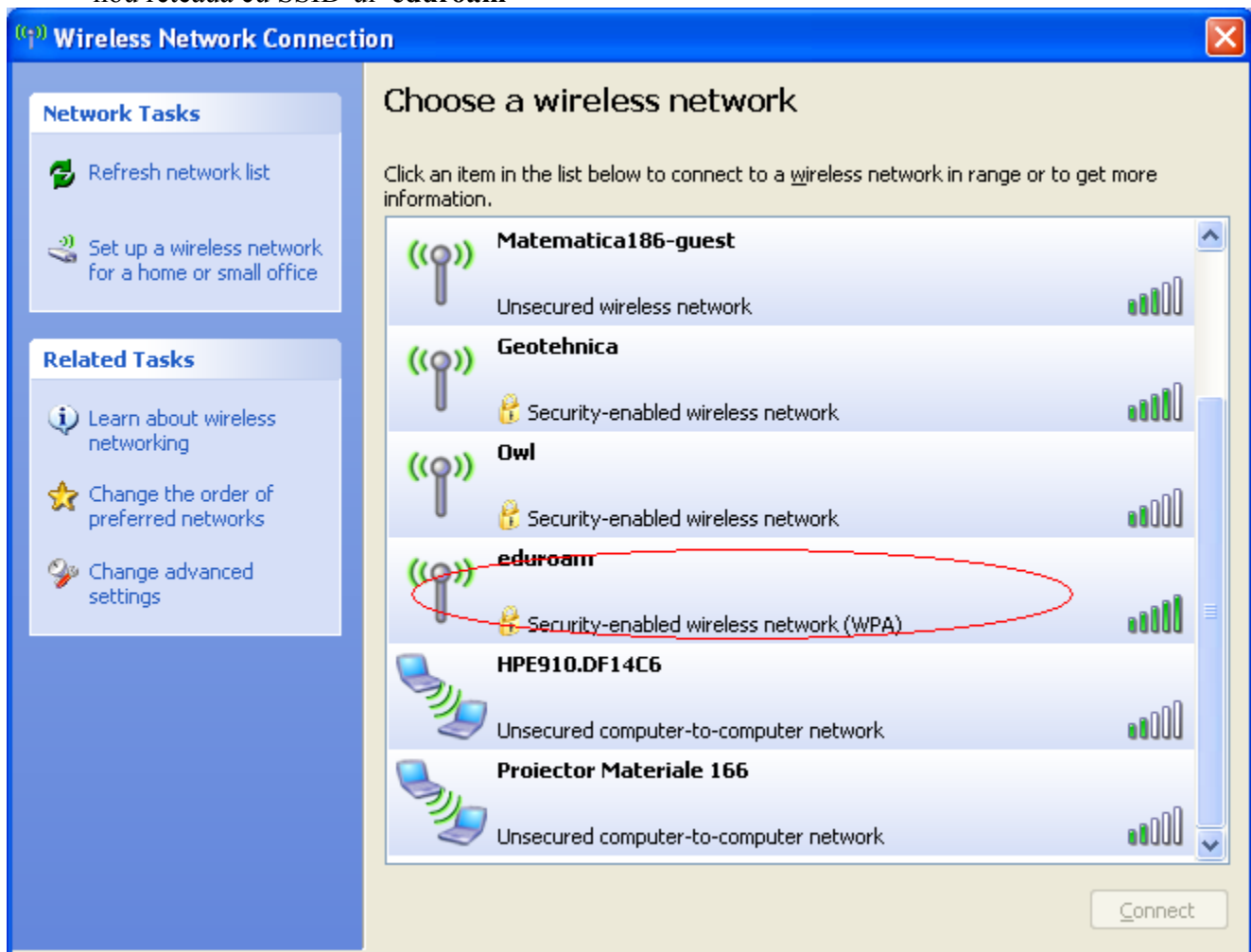
8. In sectiunea **Properties** se selecteaza in rubrica **Select authentication method: Secured Password (EAP MSCHAP v2)** iar apoi sa da click pe butonul **Configure**



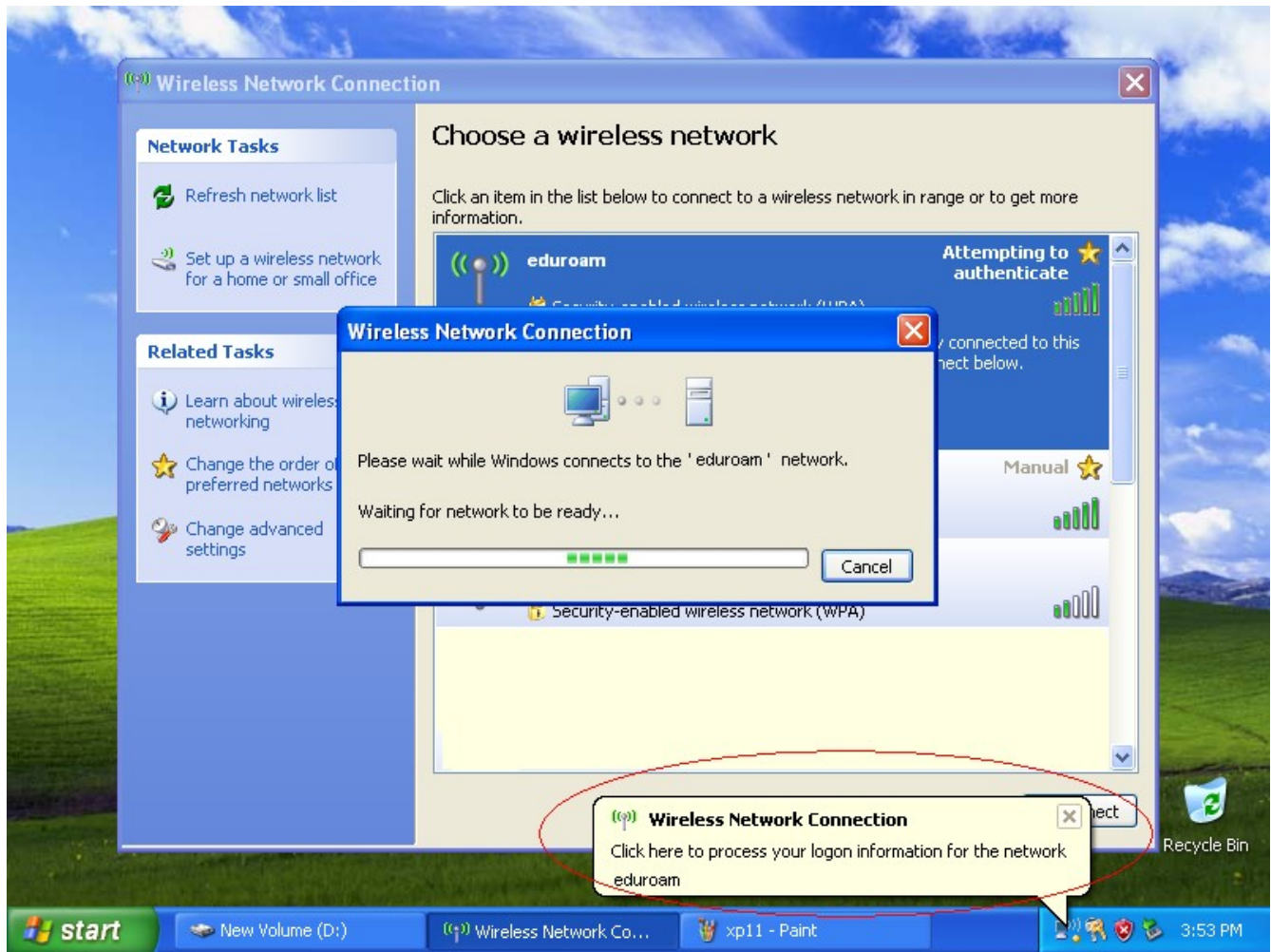
9. In sectiunea **Configure** se **debifeaza** rubrica **Automatically use my Windows logon name and password (and domain if any)** apoi se apasa pe butonul OK



10. Se inchide meniul properties apoi din meniul **Wireless network connections** se selecteaza din nou reteaua cu SSID-ul **eduroam**



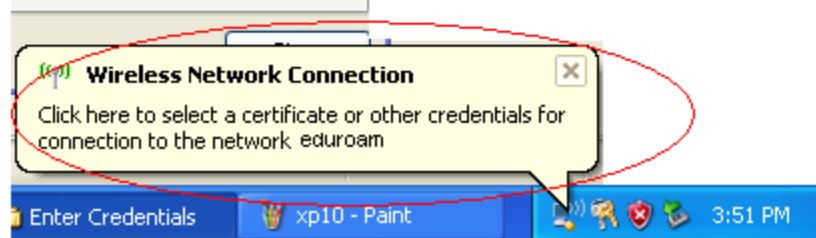
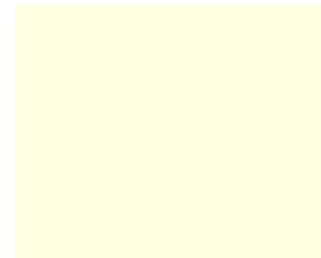
11. Se da click pe “Balonul” care va solicita informatiile de logare in retea eduroam



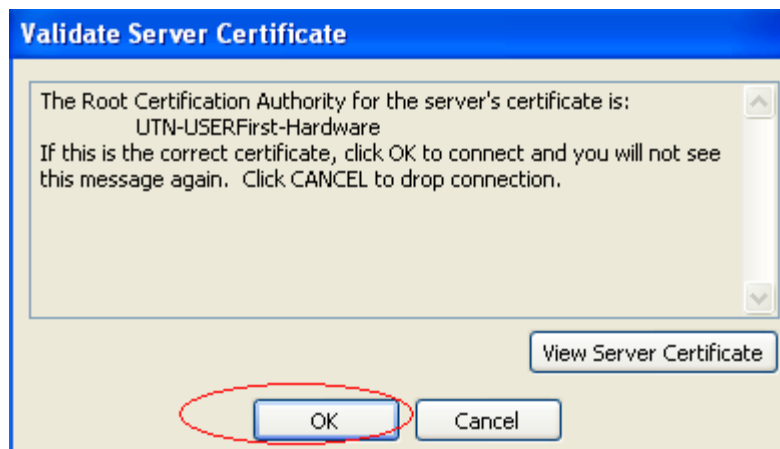
12. O sa apara o fereastra in care trebuie sa introduceti credentialele dumneavoastra, care trebuie sa fie de forma:
- a) Pentru cadrele didactice: Username: Nume.Prenume@departament.utcluj.ro
Parola: Parola contului dumneavoastra de Intranet
 - b) Pentru studenti: Username :User@student.utcluj.ro
Parola: Parola contului dumneavoastra de Student



13. O sa apara un nou “balon” cu mesajul “ **Click here to select a certificate or other credentials for connection to the network eduroam**”. Se da click pe el



15 Pe ecran va apareea certificatul serverului de Radius care trebuie acceptat prin apasarea butonului **OK**



In acest moment configurarea sistemului dumneavoastra pentru accesarea retelei eduroam este completa